

*Opening Times:*

- **Date:** Saturday, April 8, 2006
- **10 AM - Noon:** Drop Off Items at Clubhouse
- **6:30 PM** Bar Opens
- **7:30 PM** Dinner
- **8:30 PM** Expert Evaluations

*Production Staff:*  
Kendall/Dietz,  
Allyns, Barretts,  
Baumgartens, Bell,  
Chalfants, Densons.

**Mt. Kemble Lake  
Country Club**

*Parties of Distinction for  
Distinguished People.*

***Trash, Treasures, & Trends  
Party Comes Back to MKL  
on Saturday, April 8!***

Collectors (serious and casual alike) are abuzz with the word that the Trash, Treasures, and Trends Party is coming back to the Mt. Kemble Lake Country Club on April 8! The dedicated production crew has prevailed upon a local expert to provide evaluation of guests' items. All this and dinner and drinks promise a good time will be had by all who attend. Bring your friends! More details on page 2.

**Menu Echoes Event Theme:**

**Arguably Collectible, Definitely Trendy**

- ***Italianate* hors d'oeuvres-**  
a succulent selection of old world goodies
- ***Colonial London* broil**  
garnished with julienned veggies and a light mushroom wine sauce on the side
- ***Klondike Gold Rush* grilled salmon**  
sprinkled with a gold dust of veggies and a light dill sauce on the side
- ***Art Deco* spinach gratin**  
recently harvested from a local nutrient source
- **Roasted new, no, old potatoes**  
part of the basement clean-up campaign
- ***Vintage Titanic* salad -**  
iceberg of course!
- ***Great Uncle Dave's* ancestral Apple tart**  
with ice cream of course!

*Special dietary requirements will be accommodated if you let us know.  
Prepared and served by some of your favorite neighborhood antiques!*



## MKL Resident Carolyn Remmey to Appear



Carolyn Remmey, owner of Remmey Antiques & Fine Art will make a return

guest appearance at the MKL Trash, Treasures, and Trends Party. Carolyn will make a presentation after dinner, providing evaluations of antiques and other collectible treasures brought by guests to the event.

For those of you who may not know, Carolyn is a member of the Appraisers Association of America. She also belongs to numerous historical societies and museums in New Jersey, Florida,

and New York. She has become a devoted speaker and auctioneer for various charitable organizations such as Homeless Solutions, Inc. She also has written for various newsgroups including the *Antiques Guide*, *Fifty Plus*, *Antiques Roadshow Insider*, *Northern New Jersey New Group* and her own newsletter, *Trash, Treasures, and Trends* (OK, so we “borrowed” the title!!).



### “White Elephant” Table

Swap your unwanted treasure for someone else’s! Bring a donation item (old, new, unique, unusual, distinct, and/or notable). All items will be placed on a table and donors will receive numbers. After dinner, numbers will be called randomly and you will be invited to take your choice from the items remaining on the table.

### Guest Collectors

If you are a collector and you would like to show some of your collection and talk about it, call Cacky Bell (973)-425-2722.

### Got Questions?

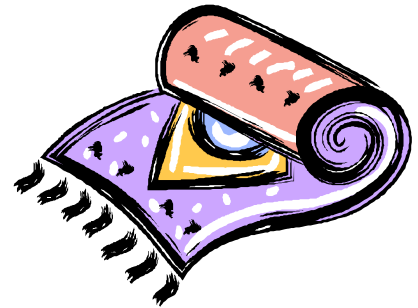
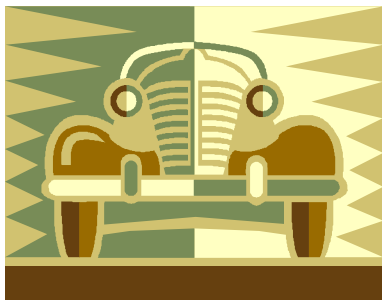
Please call our crackerjack production staff if you have any questions about logistics.



# Guests Invited to Bring Items for Evaluation!

Each household coming to the MKL Trash, Treasures, and Trends Party is invited to bring one antique, collectible, or otherwise interesting item to be evaluated by our guest expert.

Artwork, books, prints, fine and costume jewelry, porcelain and ceramics, silverware, dolls, toys, coins, and small pieces of furniture are among the possible categories. Don't forget 20<sup>th</sup> Century collectibles and memorabilia. Check your attics and basements – everyone has something with an interesting story to tell.



Detach and return with your payment

## RSVP and Item Inventory Response Form

Each household invited to bring one item for evaluation.

**Cost: \$23 per person**  
**RSVP to Cacky Bell on Lake Trail West**  
**by April 1**

Please describe the item(s) that you plan to bring for expert evaluation (physical description and perhaps an interesting fact or history of the item).

I/We will be attending \_\_\_\_

Item

I/We will be bringing item \_\_\_\_

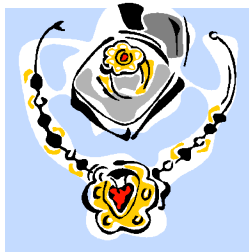
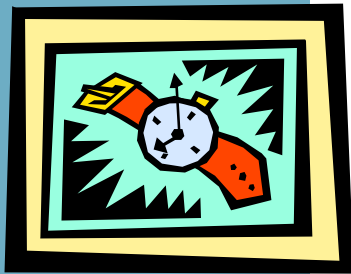
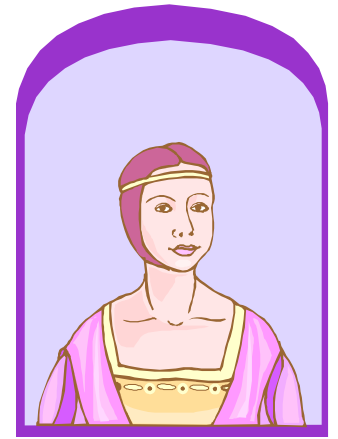
\_\_\_\_\_  
\_\_\_\_\_  
\_\_\_\_\_

Name \_\_\_\_\_

*The Production Staff encourages guests to drop off their items at the Clubhouse on Saturday, April 8 between 10 AM and Noon, so that arrangements can be made to display them properly.*

*Also, don't forget to bring a swap item for the "White Elephant" table.*





Mt. Kemble Lake  
Country Club

*Parties of Distinction for  
Distinguished People.*

MEMBER  
MT. KEMBLE LAKE COUNTRY CLUB  
MT. KEMBLE LAKE